

Get the Royal Edge Advantage with RPI



RPI RE-FLEX TPO ANCHOR STRIP WITH TAPE

RPI RE-FLEX TPO MEMBRANE

DESCRIPTION

RPI Re-Flex TPO Anchor Strip is a 45 mil reinforced TPO membrane available in 6" or 10" wide rolls with a nominal 30 mil cured tape adhesive laminated along one (6"), or both (10") edges of the membrane. The laminated tape adhesive strips are 3" wide.

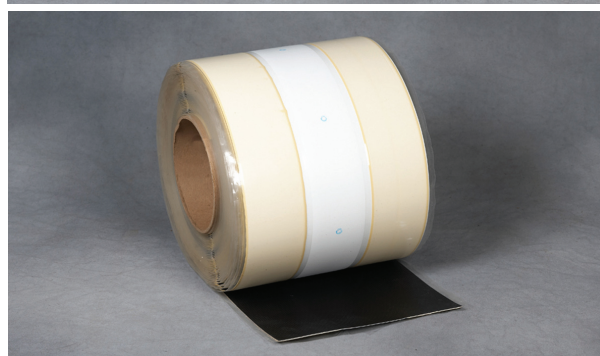
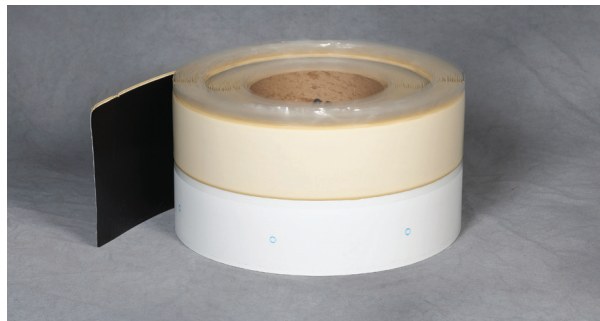
Six-inch Anchor Strip has the adhesive tape laminated to one side with a clear release membrane. The Anchor Strip is secured with Seam Fastening Plates and fasteners horizontally (roof deck) or vertically (curbs,walls) at inside angle changes and around roof protrusions before the field membrane is installed. The Ten-inch wide Anchor Strip is designed to be installed horizontally on the roof deck. It can be used as a perimeter sheet anchor strip eliminating the need for narrow width perimeter sheets.

THE ROYAL EDGE ADVANTAGE

- Available in 6" and 10" widths.
- May be warmed for easier application during cold weather applications.
- Clear poly release liner won't tear or wrinkle like brown paper liner.
- Adds additional securement to field membrane at inside angle changes and around roof penetrations in fully adhered and mechanically attached installations.

Six-inch Anchor Strip Installation

- Unroll the Anchor Strip at the angle change with the release film facing up.
Deck Securement: Layout Anchor Strip with fasteners closest to angle change with the release film farthest from angle change.
Wall Securement: Anchor Strip is fastened to wall or curb with release film horizontal with roof deck.
- Layout and position the Seam Fastening Plates over the re-inforced membrane 1/8" to 3/4" from the angle change, at a maximum of 12" on center. Do not fasten the Seam Plates over the release liner.
- Thoroughly clean and prime the field membrane that overlaps the Anchor Strip.
- Using a scrub pad, apply primer to the Anchor Strip area and plates and fasteners. Scrub the primer until it dries to a smooth flat sheen, free of puddles.
- After the primer has dried to a finger touch, remove the release film on the Anchor Strip and roll the primed field membrane onto the exposed tape adhesive. Mate the tape adhesive to the field membrane with hand pressure.



- Expose the Anchor Strip by pulling the field membrane away from the angle change and apply RPI Bonding Adhesive to the exposed Anchor Strip, wall/curb surface, and field membrane.
- After the adhesive has dried (check by using the finger push test) roll the field membrane into the angle change without making contact with the wall or curb. After the field membrane is completely mated to the inside corner, continue rolling the membrane up the wall/curb. **Important:** The field membrane must be completely adhered into the angle change. Do not allow the field membrane to "bridge" the angle change.
- Using a push broom, broom the entire wall/curb flashing to ensure 100% adhesion.
- After the field membrane is completely adhered and broomed in, using a 2" hand roller, roll the entire 6" Anchor Strip including the inside angle change and 6" up the curb/wall membrane.

Refer to RPI Specifications for more detailed and specific applications.

Ten-inch Field of Roof Installation

- Unroll and position the Anchor Strip with the release film facing up.
- Layout and position the Seam Fastening Plates over the center line of the re-inforced membrane, at 6" on center or a maximum of 12" on center. Do not fasten the Seam Plates over the release liner.
- Using Membrane Cleaner, thoroughly clean the Anchor Strip and field membrane that will contact and overlap the Anchor Strip.
- Using a scrub pad, apply primer to the Anchor Strip area and plates and fasteners. Scrub the primer until it dries to a smooth flat sheen, free of puddles.

Get the Royal Edge Advantage with RPI



RPI RE-FLEX TPO ANCHOR STRIP WITH TAPE

ROYAL EDGE EPDM MEMBRANE

PRECAUTIONS

Avoid prolonged contact with skin. Thoroughly wash affected area with soap and water.

Do not store where temperatures reach or exceed 90° F (32° C). High storage temperatures will affect shelf life. Keep the Anchor Strip in original packaging until use.

In warm, sunny weather, keep the Anchor Strip in a shaded area until use.

When the ambient temperature is near the dew point, condensation may occur on the primed area. If this occurs, discontinue installation until conditions are more favorable. Allow the surface to dry and re-apply the primer to the previously primed surface.

Installation at temperatures below 40°F (5°C)

1. After the primer is applied and has dried, remove the release film and roll the primed field membrane over the Anchor Strip. Using a hot air gun, immediately heat the top of the field membrane, directly over the Anchor Strip until it is hot to the touch and hand roll the membrane. Take care not to blister or burn the membrane.

Typical Properties and Characteristics

	6" Anchor Strip	10" Anchor Strip
Base	Membrane - EPDM (Polyester Re-inforced) Adhesive - EPDM	Membrane - EPDM (Polyester Re-inforced) Adhesive - EPDM
Roll Size	6" x 100' roll	10" x 100' roll
Thickness	TPO 45 mil Tape 35 mil	TPO 45 mil Tape 35 mil
Packaging	200 ft. per ctn. 2 rolls	100 ft. per ctn. 1 roll
Net Wt. per ctn.	40 lbs.	32 lbs.
Shelf Life	1 year	1 year